

This is a detailed historical map of Charleston, South Carolina, likely from the late 19th century. The map shows the city's layout, including the Ashley River and the Cooper River. The city is depicted with a dense grid of streets and numerous buildings. The Ashley River is labeled at the top, and the Cooper River is labeled at the bottom. The map also shows the city's harbor and the surrounding landscape. The map is oriented with North at the top. The city's layout is characterized by a grid of streets, with the Ashley River forming a natural boundary on the north and the Cooper River forming a natural boundary on the south. The city is densely packed with buildings, and the harbor is filled with ships. The map is a valuable historical document that provides a detailed view of Charleston's urban development and its relationship with the surrounding waterways.

And

African American Historic Resources Survey



ARCHAEOLOGISTS • HISTORIANS

5 women-owned small business



NEW SOUTH ASSOCIATES

ARCHAEOLOGISTS • HISTORIANS

a women-owned small business

Who we are:

- Established in 1988
- Women-owned small business
- Headquarters in Stone Mountain, Georgia
- Offices in North and South Carolina, Tennessee, and Virginia

What we do:

- Architectural history
- Context development
- Archaeology
- Preservation planning
- Geophysical studies



What is a Historic Architectural Resources Survey?

As per the *Survey Manual for South Carolina Statewide Survey of Historic Properties*, a historic resources survey is:

"the process of systematically identifying historic properties within the boundaries of a specific geographical area, documenting their location and physical characteristics, and evaluating their importance within an appropriate historical context."

"...a multi-part process that consists of designing the survey's goals and parameters, conducting research about the survey area, completing fieldwork, data entry and organization, and reporting the findings of the survey."

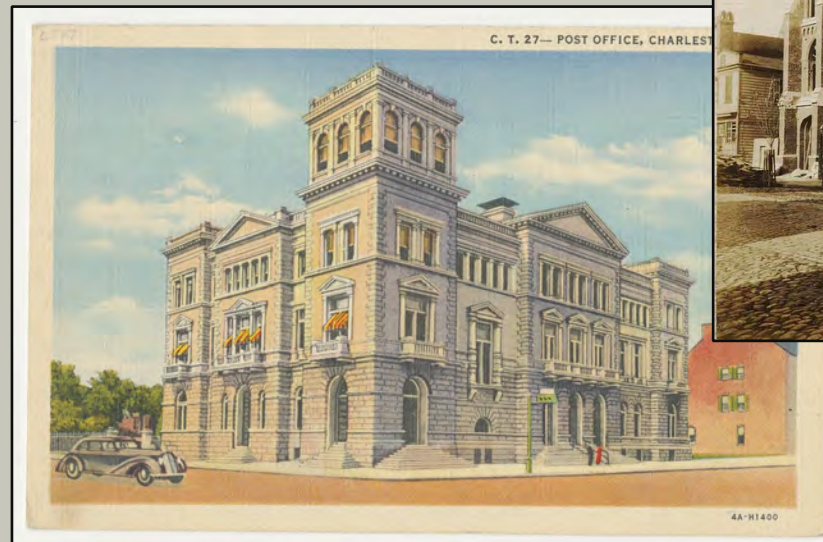
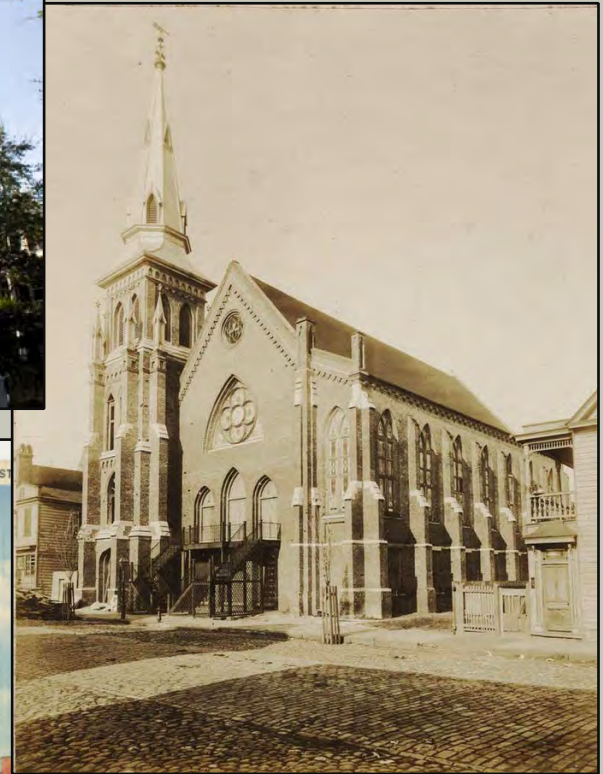
Why Complete a Historic Architectural Resources Survey?

Completed surveys can be used to:

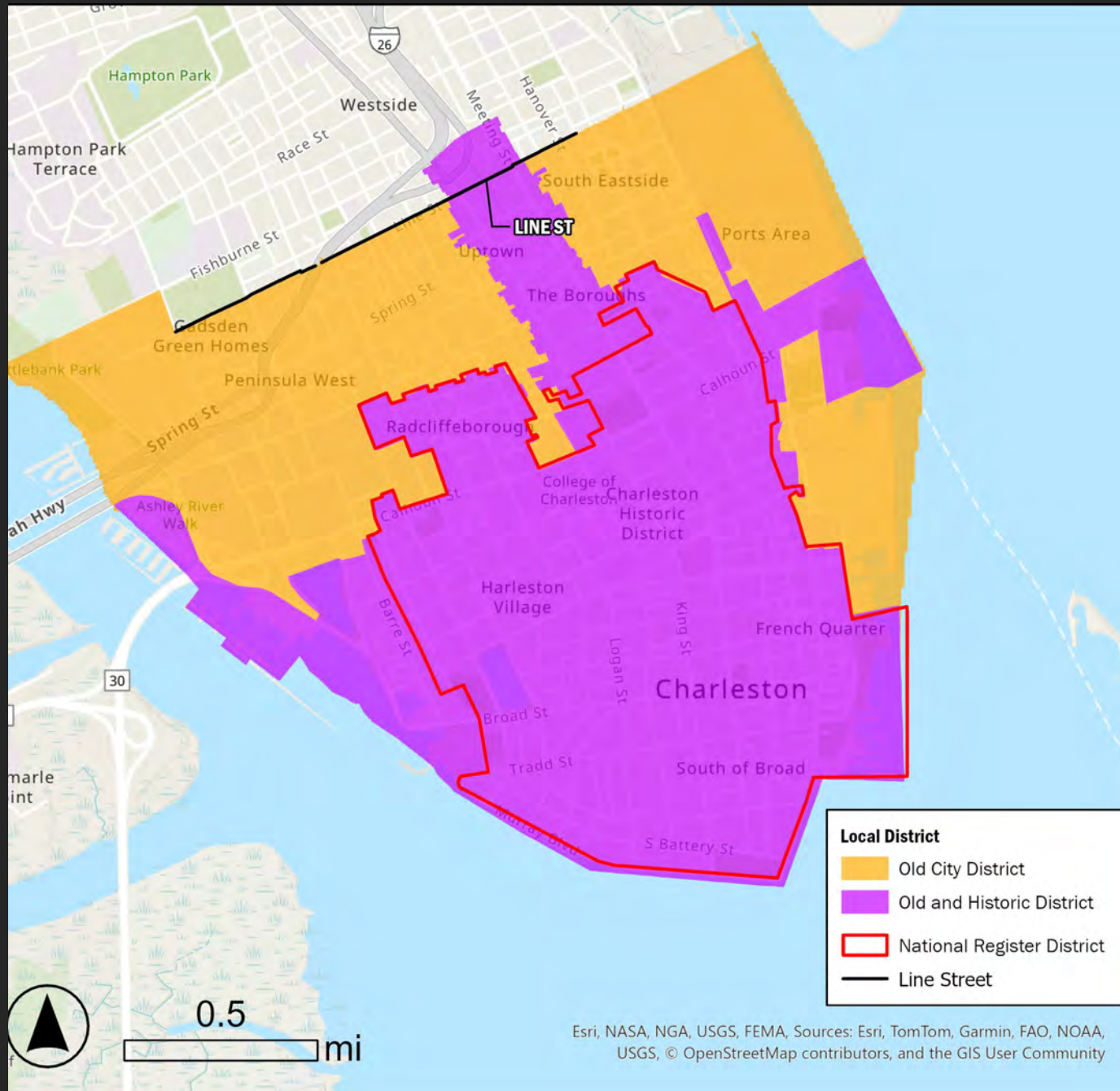
- Identify eligible resources for possible listing in the National Register of Historic Places
- Provide recommendations for updating existing National Register listings and districts
- Assist in preservation efforts by Certified Local Governments
- Support local designations of buildings and districts
- Compliance review by government agencies
- Aid preservation and land-use planning
- Increase awareness of, and interest in, a community's historic resources

Update to the City of Charleston's Historic Districts

- Old and Historic District and Old City District
- Inventory of the buildings, structures, and sites within the districts last completed in 1986
- Survey to revisit previously surveyed historic resources to update existing survey information, when necessary, and to identify undocumented buildings and structures 50 years old and older
- Due to the number of properties within these historic districts, prioritizing which properties to survey will be necessary
- The updated survey information is important to maintain the City's historic districts and is used to "identify structures within the peninsula of Charleston which should be preserved, maintained, and protected in the public interest and to provide guidance for the Board of Architectural Review" (City of Charleston Zoning Ordinance).

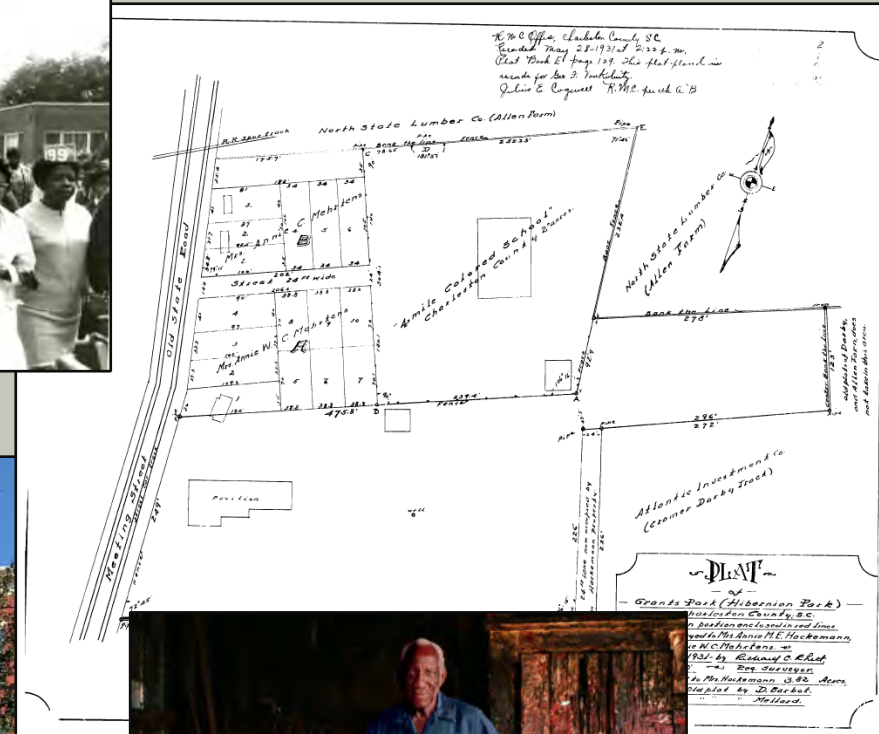


Update to the City of Charleston's Historic Districts

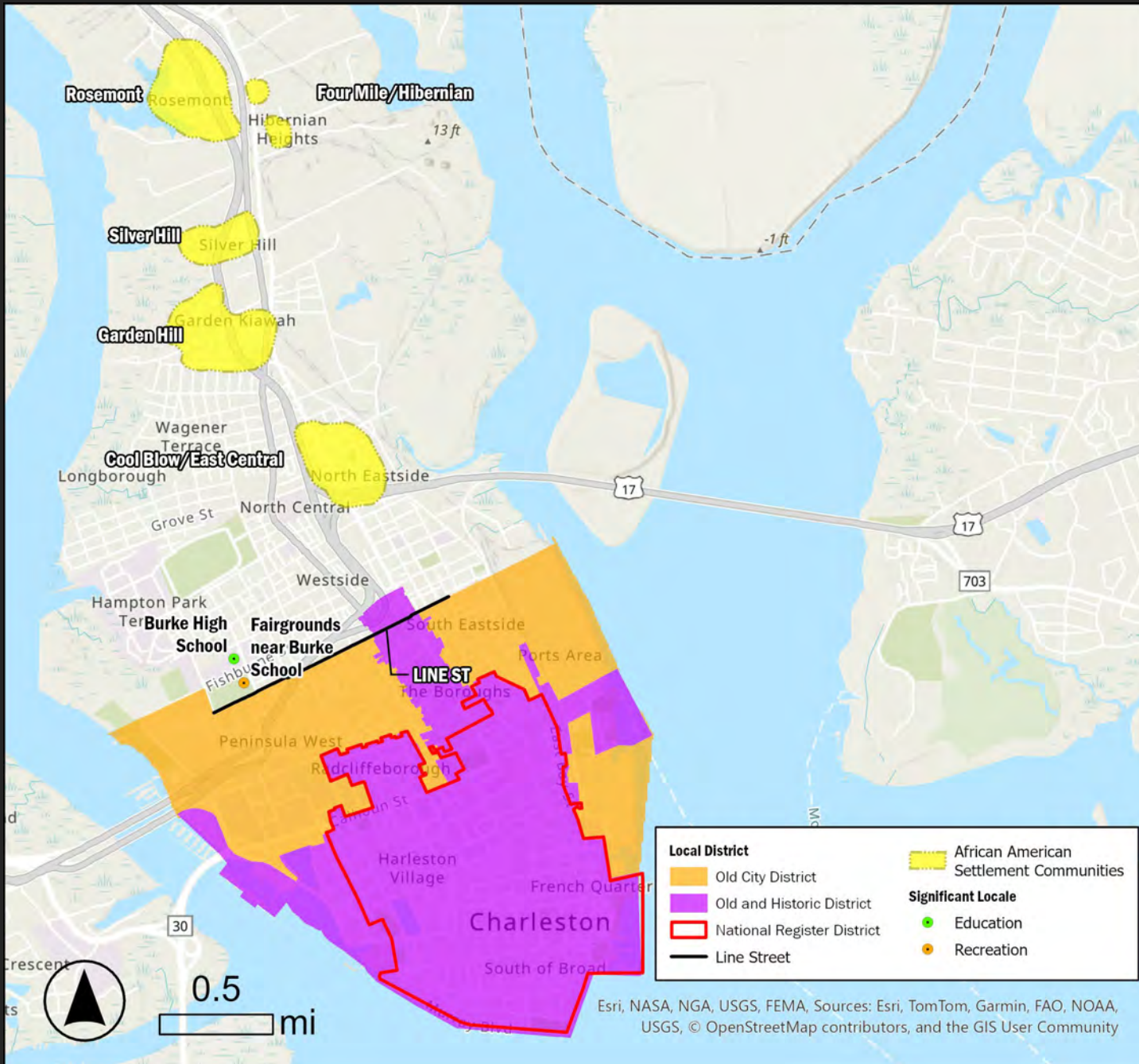


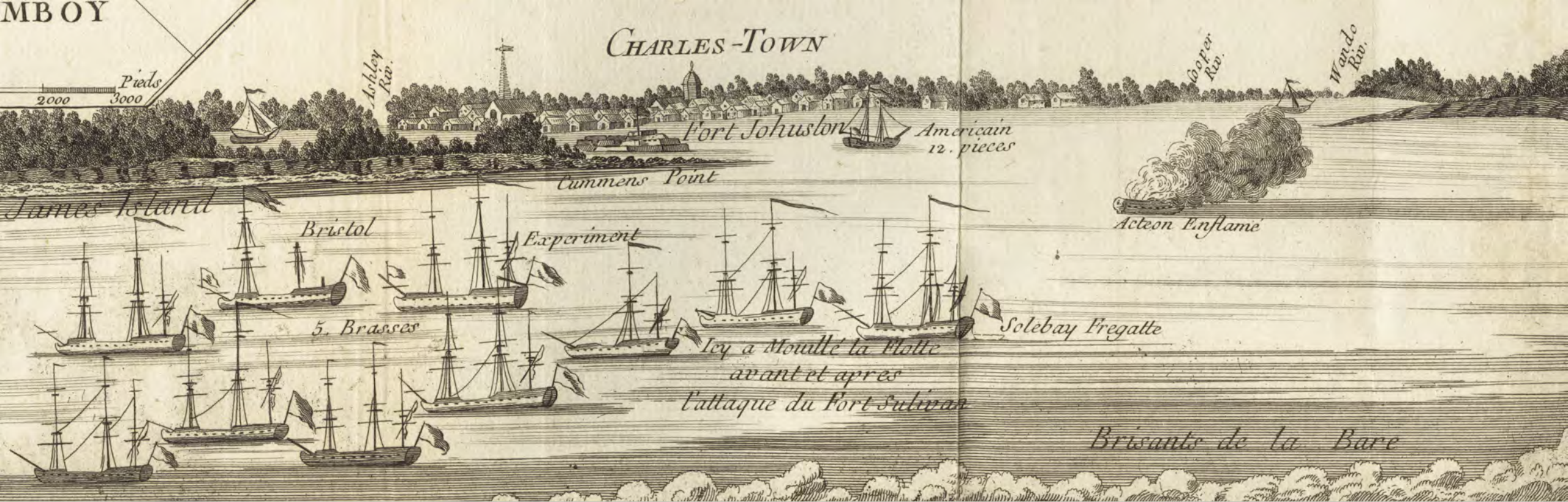
African American Historic Resources Survey

- Grant-funded Survey
- Identify and document African American Settlement Communities and Urban Enclaves
- Focus on buildings, structures, and sites associated with the architectural and cultural heritage of Charleston's African American Community
 - Old & Historic District
 - Old City District
 - Neighborhoods north of the Old City Line on the peninsula
- Resources dating to 1974 and older, with particular attention on the Civil Rights Era.



African American Historic Resources Survey

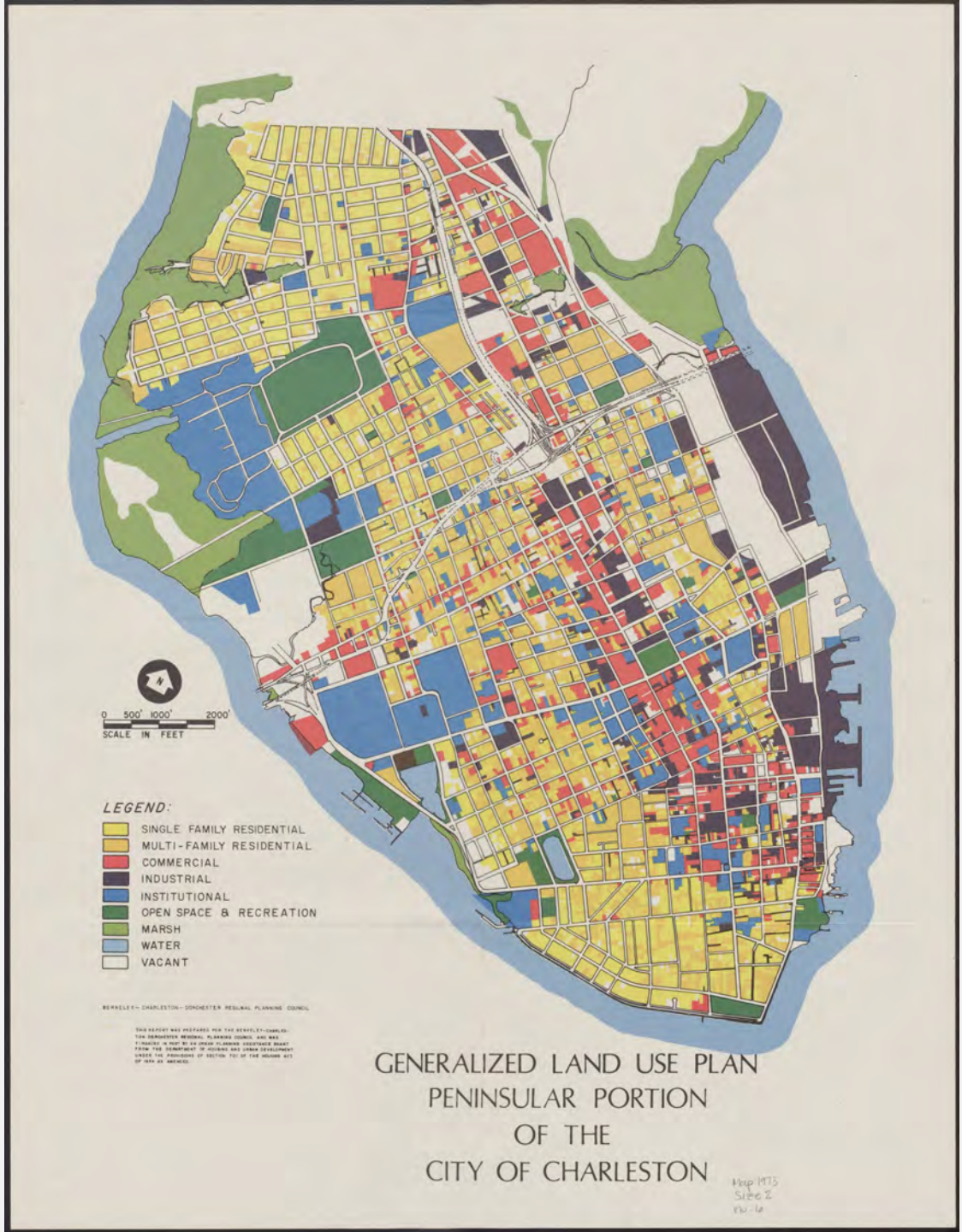




Historic Resources Survey Process

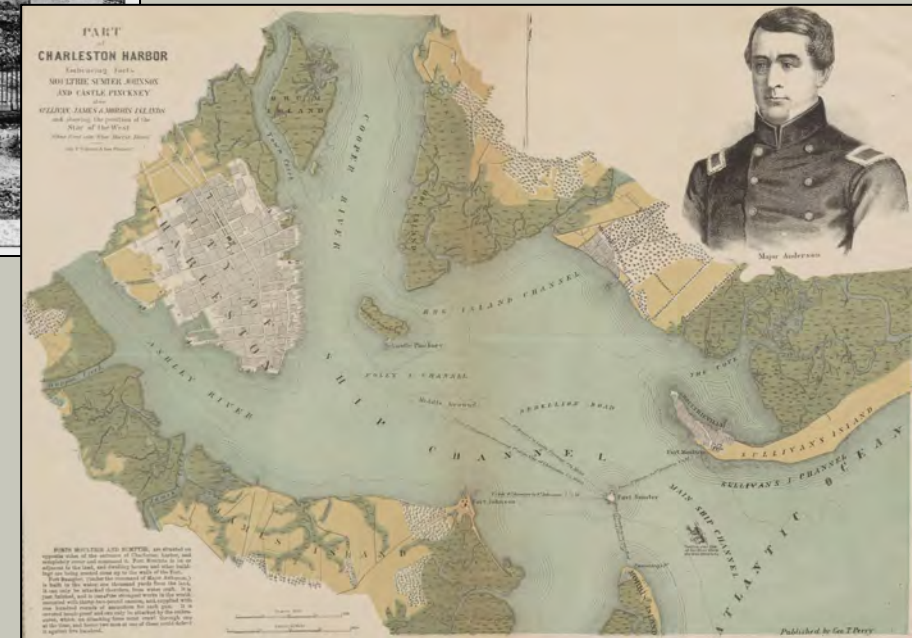
South Carolina Historic Resources Surveys

- Project in two parts:
 - Historic Context
 - Guides the field survey
 - Assist in determining what is important and where are we likely to find it.
 - Identification and documentation of historic architectural resources
 - Will guide later research, projects, and planning



Historic Context

- Archival Research
 - Local and Statewide
- Primary Materials
 - Maps and Plats
 - Newspapers/Journal Articles
 - Diaries/Correspondence
 - Photographs
- Secondary Sources
 - Books
 - Scholarly Material
 - Existing NRHP Nominations



Historic Resources Survey

- Survey Preparation
 - Create Field Maps from Parcel Data
 - Import Previously Recorded Historic Resources Survey Data
- Document Resources
 - ArcGIS-based database on Google Pixel Phones
 - Record architectural details, locational data, and take photographs



Survey Methods

- ArcGIS-based system integrates into online platform
- Fields in the survey database correspond to the fields in the South Carolina Statewide Survey Form
- Field data and photographs associated with the GIS data point
- Information gathered in the field to be used to create maps and survey forms
- Data to be used by the City of Charleston to aid in preservation planning

1:09

Collect

Surveyed Resource Point: 1
33.959974°N 83.390305°W

Take Reference Photo

At least one reference photo of the resource must be taken and attached. For photo documenting the resource, please use the related photo log table.

General Information

Identification *

Resource Type / Building

Historic Name
Smith House

Common Name

Street Address *
123 Cobb Street

City *
Charleston

Neighborhood

No

County

1:10

Collect

Surveyed Resource Point: 1
33.959974°N 83.390305°W

Property Description

Historic Core Stone
Rectangular

Commercial Form
No value

Stories
1.5 Stories

Construction
Frame

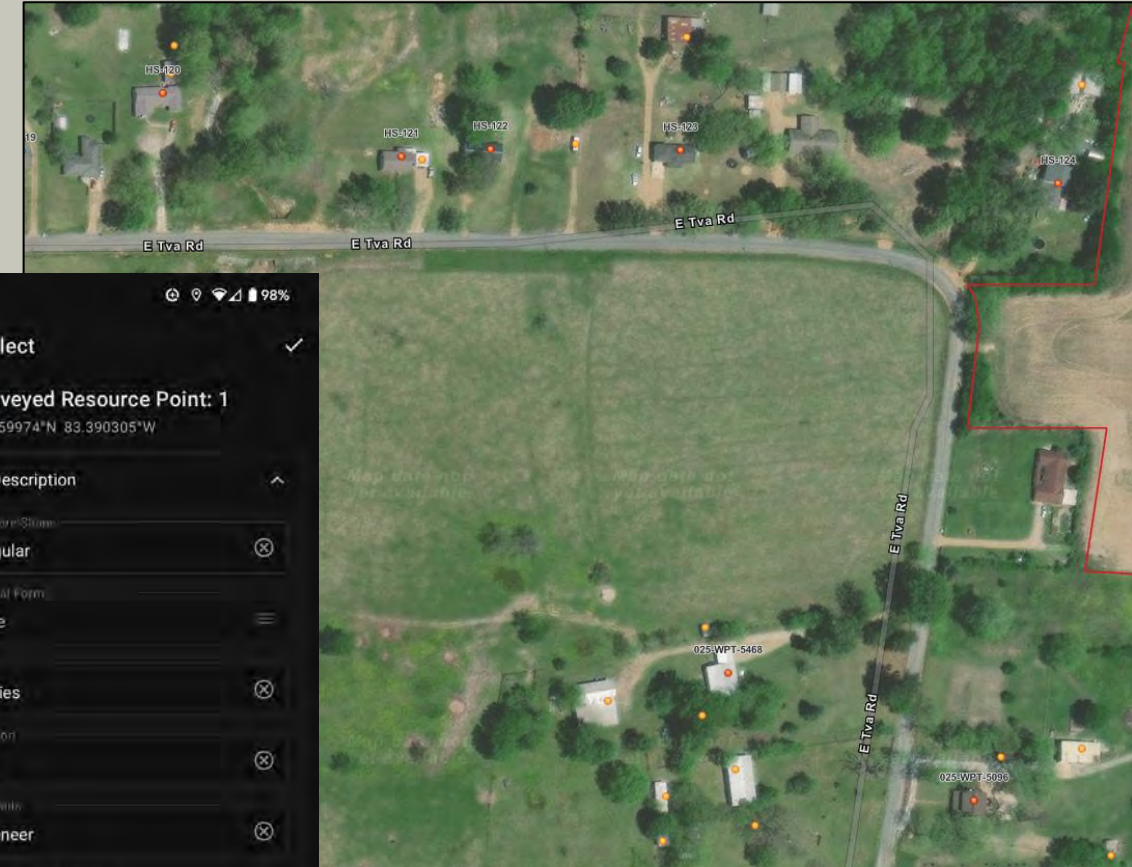
Exterior Walls
Brick Veneer

Exterior Walls (True Multiple)
No

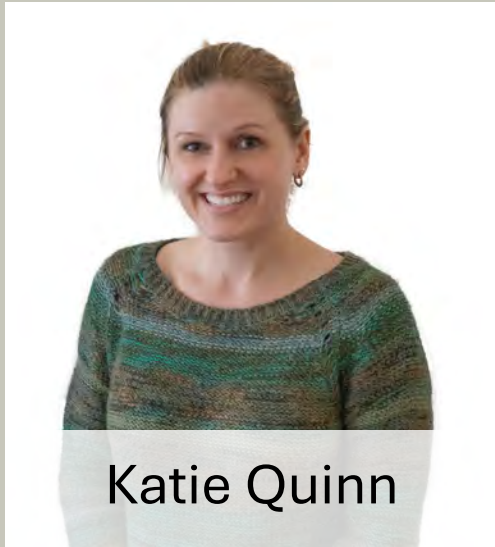
Foundation
No value

Roof Shape
No value

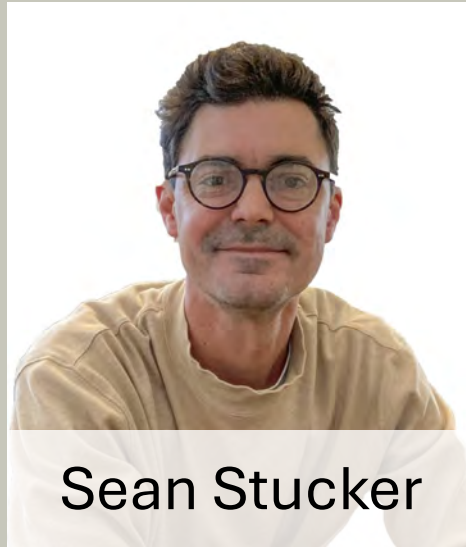
Roof Material
No value



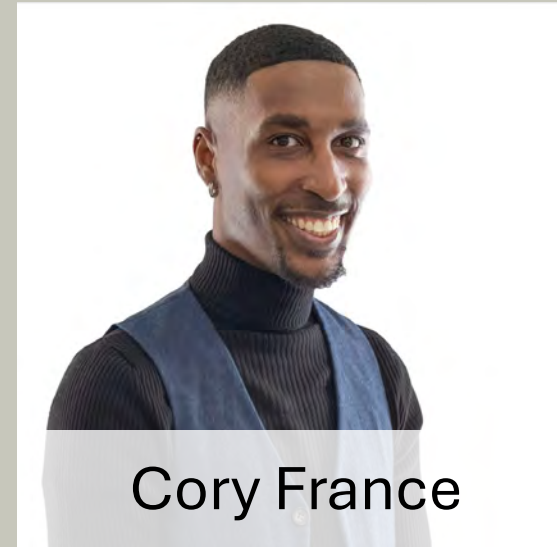
Columbia Branch Historians



Katie Quinn



Sean Stucker



Cory France

Project Staff:

Summer Ciomek – Project Manager

Renee' Donnell – Historian/Oral Historian

John Kannady and Matthew Tankersley – Geospatial Data Manager

C.T. 1—The Old Market, Charleston, S. C.
"America's Most Historic City"

Questions?
Comments?
History to Share?

Or see one of us afterward the meeting.
We'd love to talk to you about
Charleston and its historic places.

