

City of Charleston

West Ashley Stormwater Project Updates

WARC
MARCH 2023



Forest Acres Drainage Improvement



Forest Acres Drainage Project

~\$11M CONSTRUCTION PROJECT –
PHASE 2

CONSTRUCTION STARTED FALL 2022

COMPLETED TREE REMOVAL,
WATER/SEWER RELOCATIONS, UTILITY
RELOCATIONS IN PROGRESS

DRAINAGE INFRASTRUCTURE
INSTALLATION PLANNED TO START
SPRING 2023

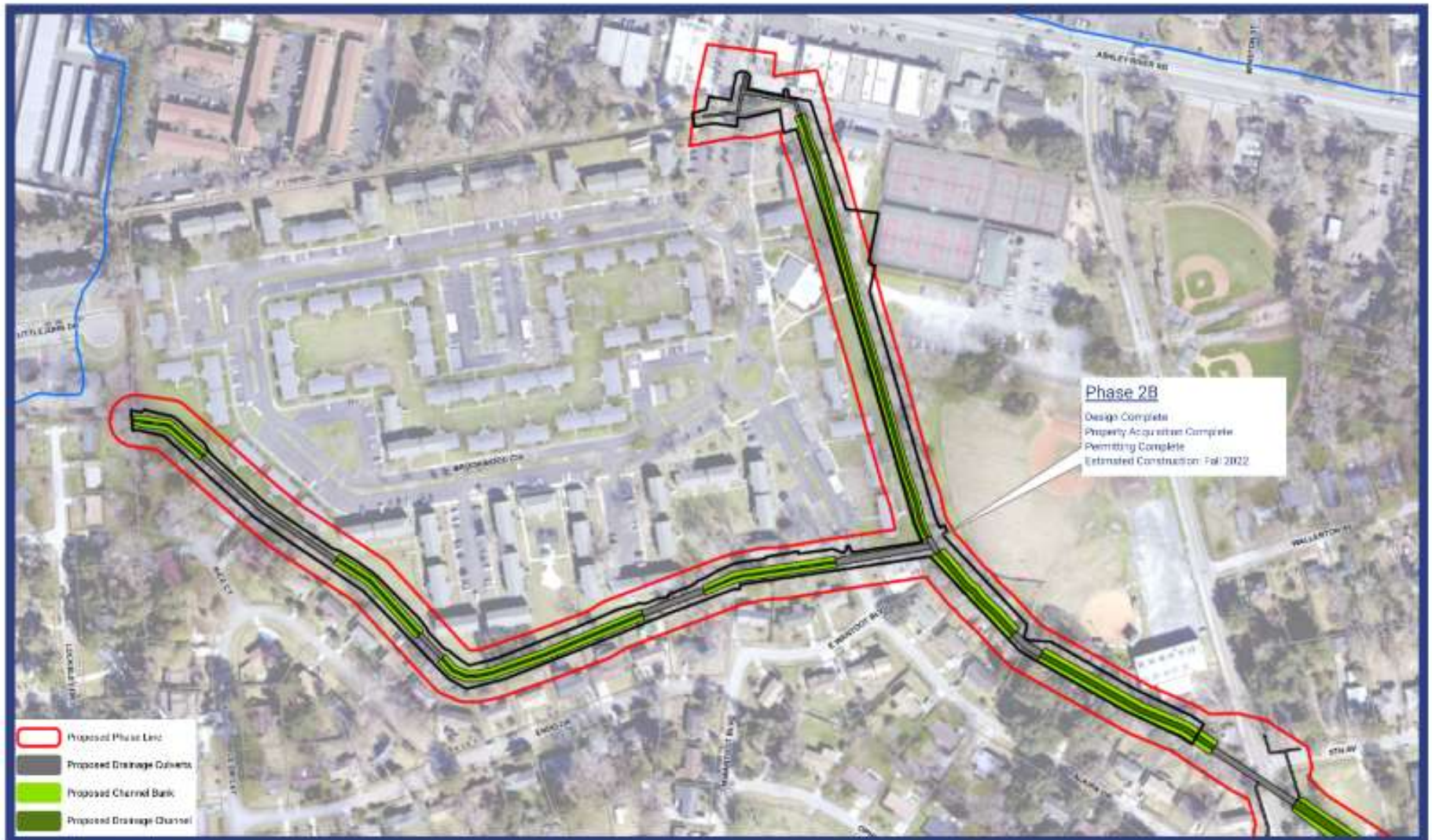
PHASE 2A COMPLETED LATE 2023



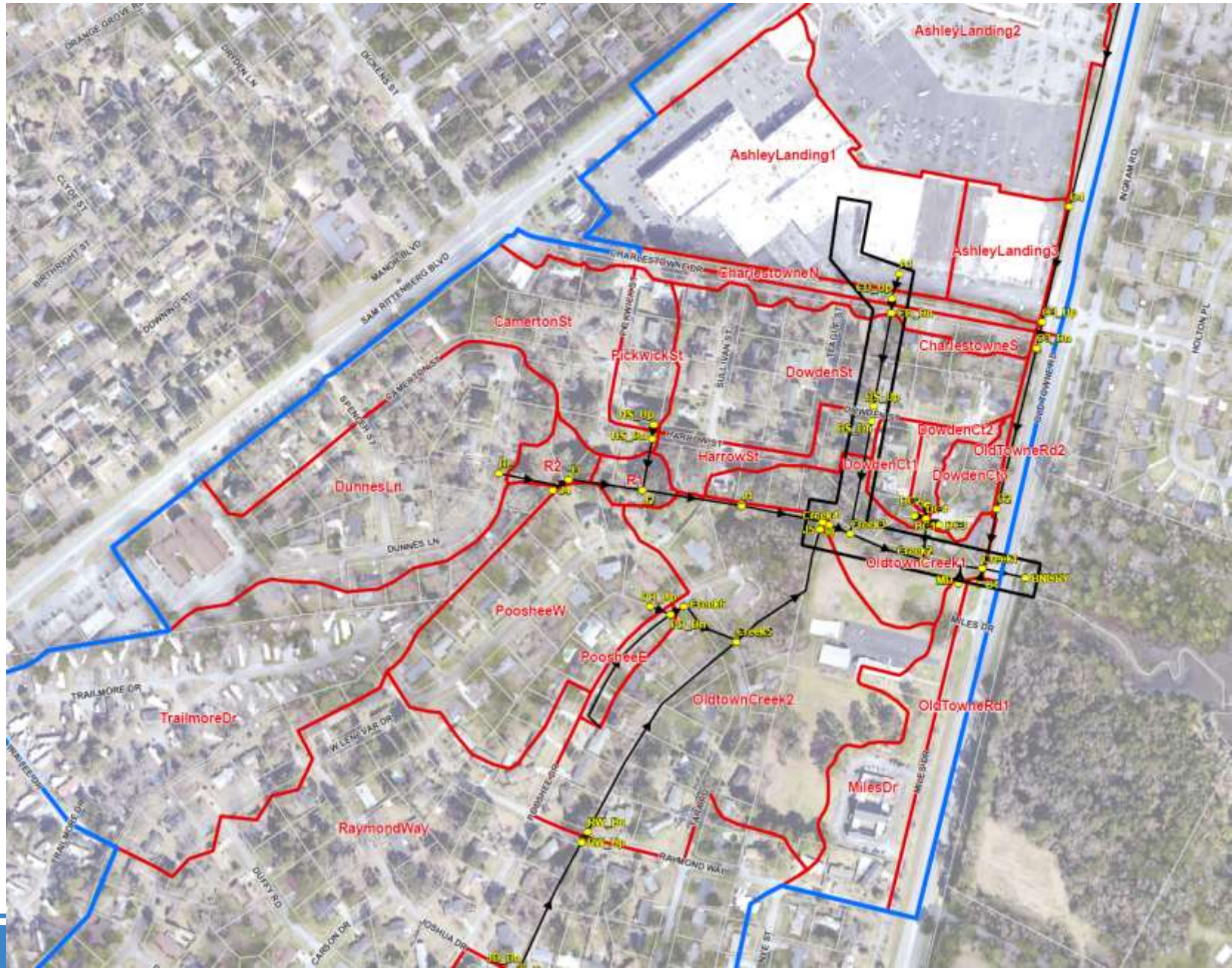
Forest Acres Drainage Project



Forest Acres Drainage Project



Dowden Area Project Update



Dowden Area Project Update

SMALL PROJECT ALLOCATION

HISTORY OF ROAD AND PROPERTY FLOODING AND
SANITARY SEWER OVERFLOWS

CONSULTANT DESIGN & SURVEY
(THOMAS AND HUTTON)

CITY FIELD OPERATIONS CONSTRUCTION
REALIGN CANAL, RESTORE PIPE SYSTEMS

COORDINATED WITH CWS – BUILDING NEW SEWER
LIFT STATION ADJACENT TO CITY DRAINAGE WORK

Dowden Area Project Update



East/West Oak Forest Drainage

Oak Forest at Keats

- 2 residential flood damaged properties acquired by the City with Federal Grants
- Construction projects following in Fall 2023 to retrofit properties to hold more stormwater and plant them with low maintenance native vegetation



East/West Oak Forest Drainage

Shelley Road

- 1 residential flood damaged properties acquired by the City with Federal Grants
- Construction project following in Fall 2023 to retrofit property to hold more stormwater, plant it with low maintenance native vegetation and provide improved maintenance equipment access to drainage system on along rear of properties



East/West Oak Forest Drainage

Drainage Artery

Evaluate Improvement Options Based on Existing Constrictions

Obtain Drainage Easements

Obtain USACE and Critical Area Permits for Canal Maintenance

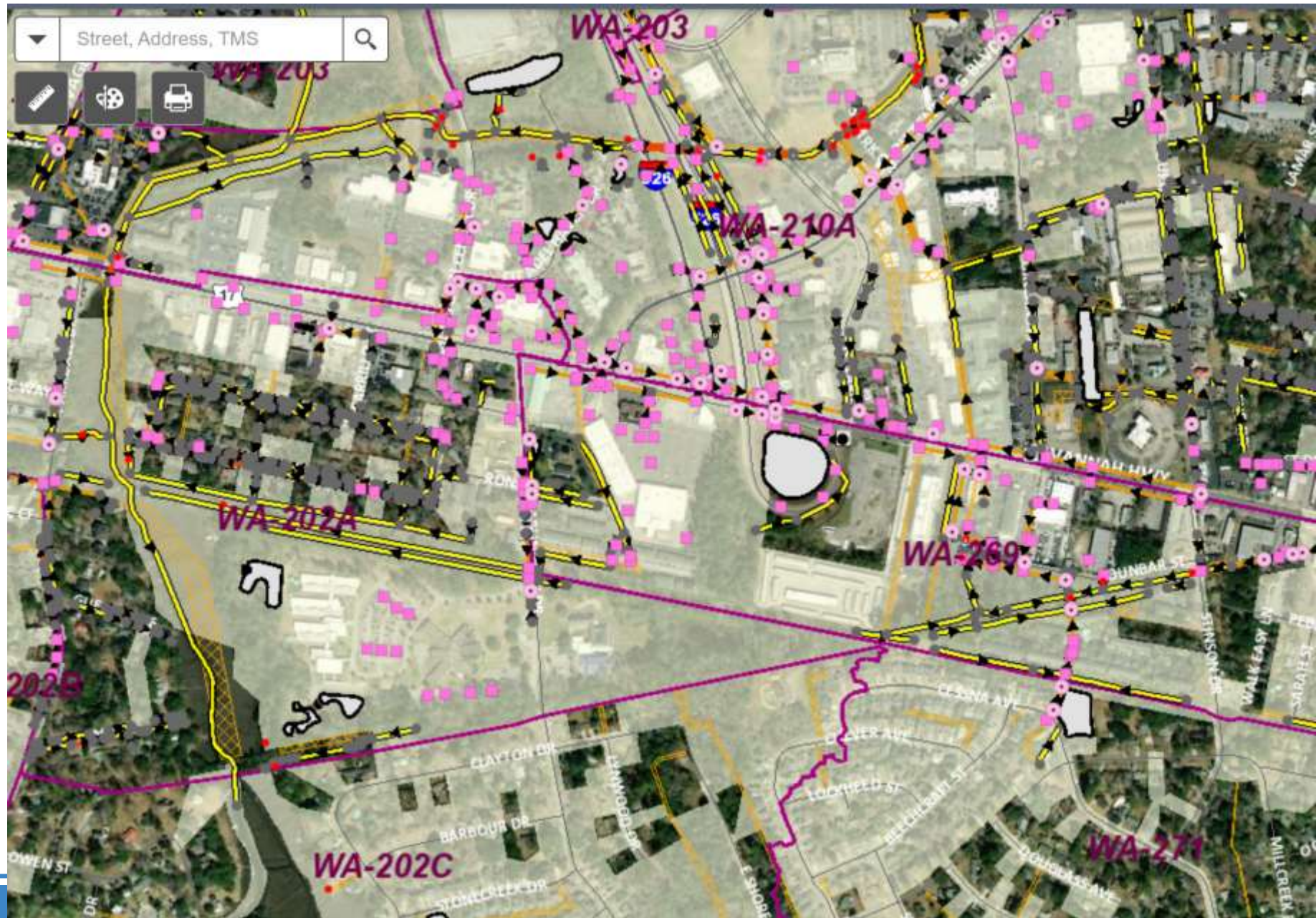
Clean Open Channel System and Existing Pipes

Obtain USACE and Critical Area Permits for Pipe Replacement/Improvement

Repair/Replace Driveway Pipe Crossing and Clean/Improve Greenway Pipe Crossing and Potentially Improve US17 Crossing



Citadel Woods/Wildwood Update



Citadel Woods/Wildwood Update



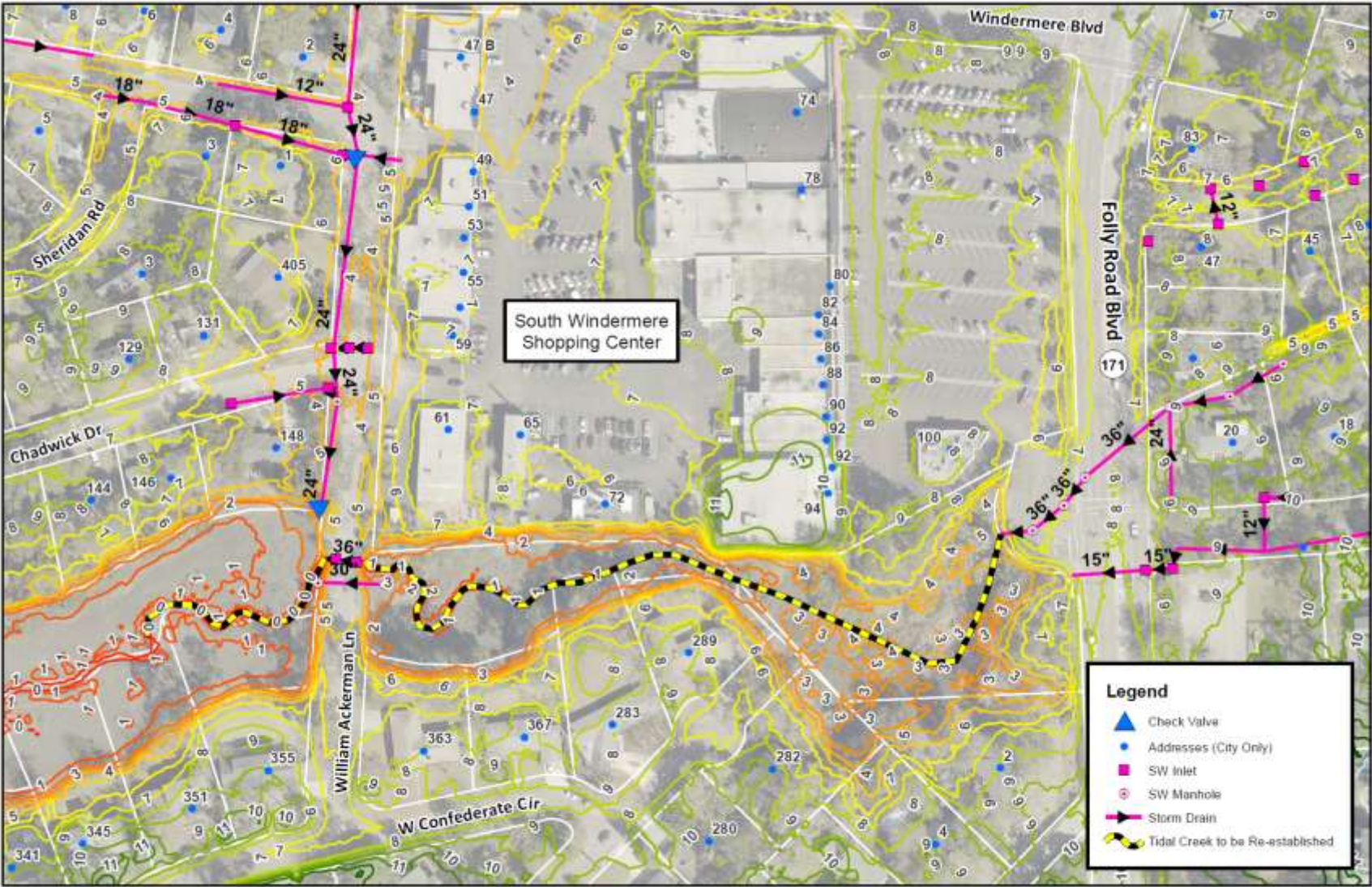
Windermere	Neighborhood	Drainage	Improvements
<p>Windermere is a small, quiet neighborhood located in the heart of the city. It is known for its historic architecture and lush greenery. The area is well-maintained and offers a peaceful living environment.</p> <p>The neighborhood is bordered by the city center to the north and the park area to the south. It is a desirable location for those seeking a quiet yet convenient lifestyle.</p>	<p>The drainage system in Windermere is well-maintained and efficient. It features a network of underground pipes and surface drains that effectively manage water flow and prevent flooding.</p> <p>Regular inspections and maintenance are conducted to ensure the system's longevity and effectiveness. Any issues are promptly addressed to maintain the highest standards of drainage.</p>	<p>Several improvements have been implemented in Windermere to enhance the quality of life for its residents. These include the installation of modern street lighting, the creation of pedestrian-friendly paths, and the addition of green spaces.</p> <p>The city has also invested in upgrading the local infrastructure, such as the road network and public transportation options. These efforts aim to make Windermere a more attractive and functional community.</p>	



PHC INFORMATION SYSTEMS

Outfall Cleaning

South Windermere Outfall Improvement



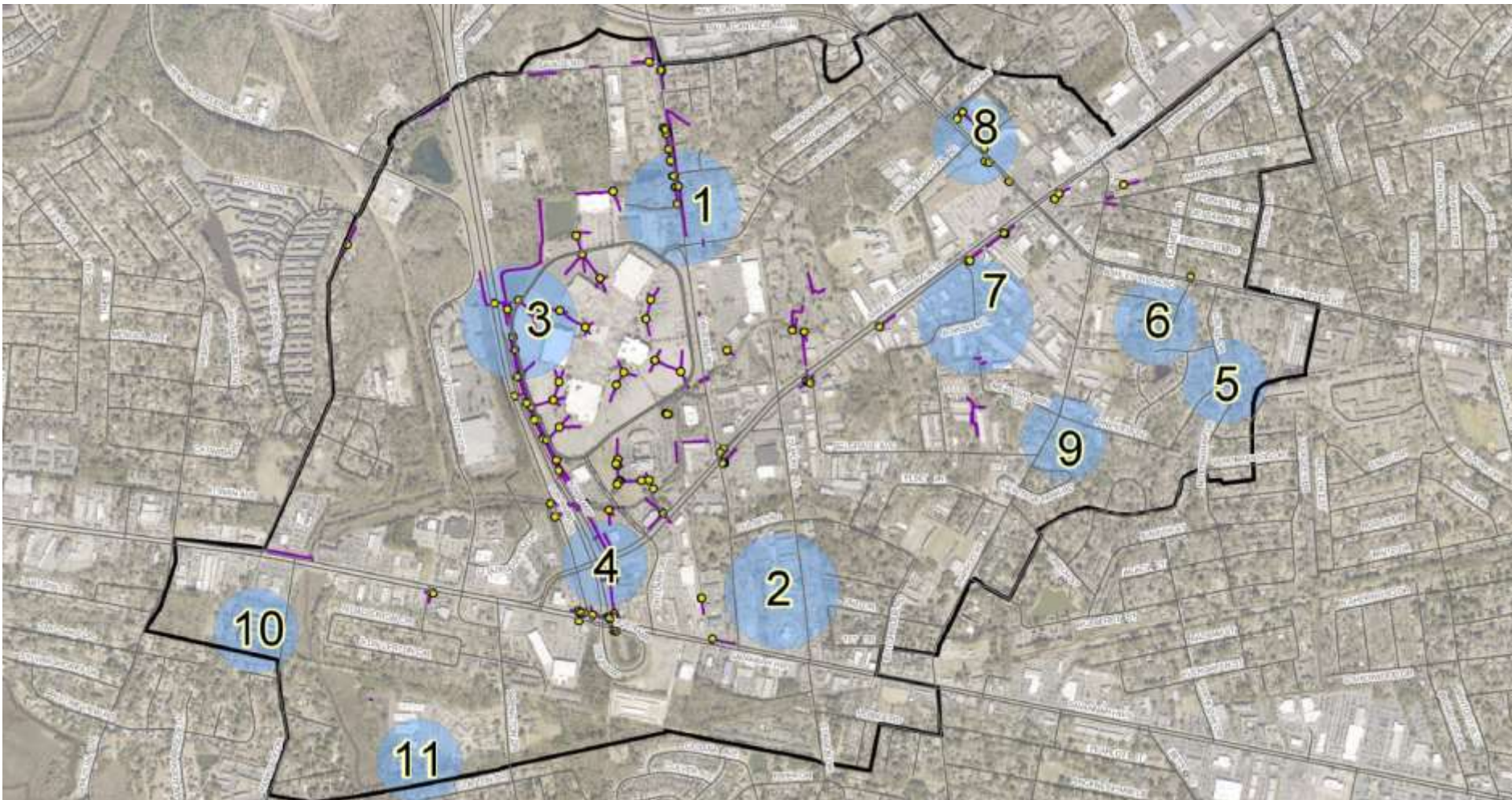
City of Charleston
Department of Stormwater Management
2 George St, Suite 2100
Charleston, SC 29401
www.charleston-sc.gov



Date: 4/28/2021

Important Disclaimer Notice
The City of Charleston makes no warranty, representation, or guaranty as to the content, sequence, accuracy, timeliness, or completeness of any information provided herein or derived from the mapping data for any reason. The City of Charleston explicitly disclaims any representations and warranties, including, without limitation, the implied warranties of merchantability and fitness for a particular purpose. The user knowingly waives any and all claims for damages against any and all of the entities comprising the City of Charleston that may arise from the mapping data.

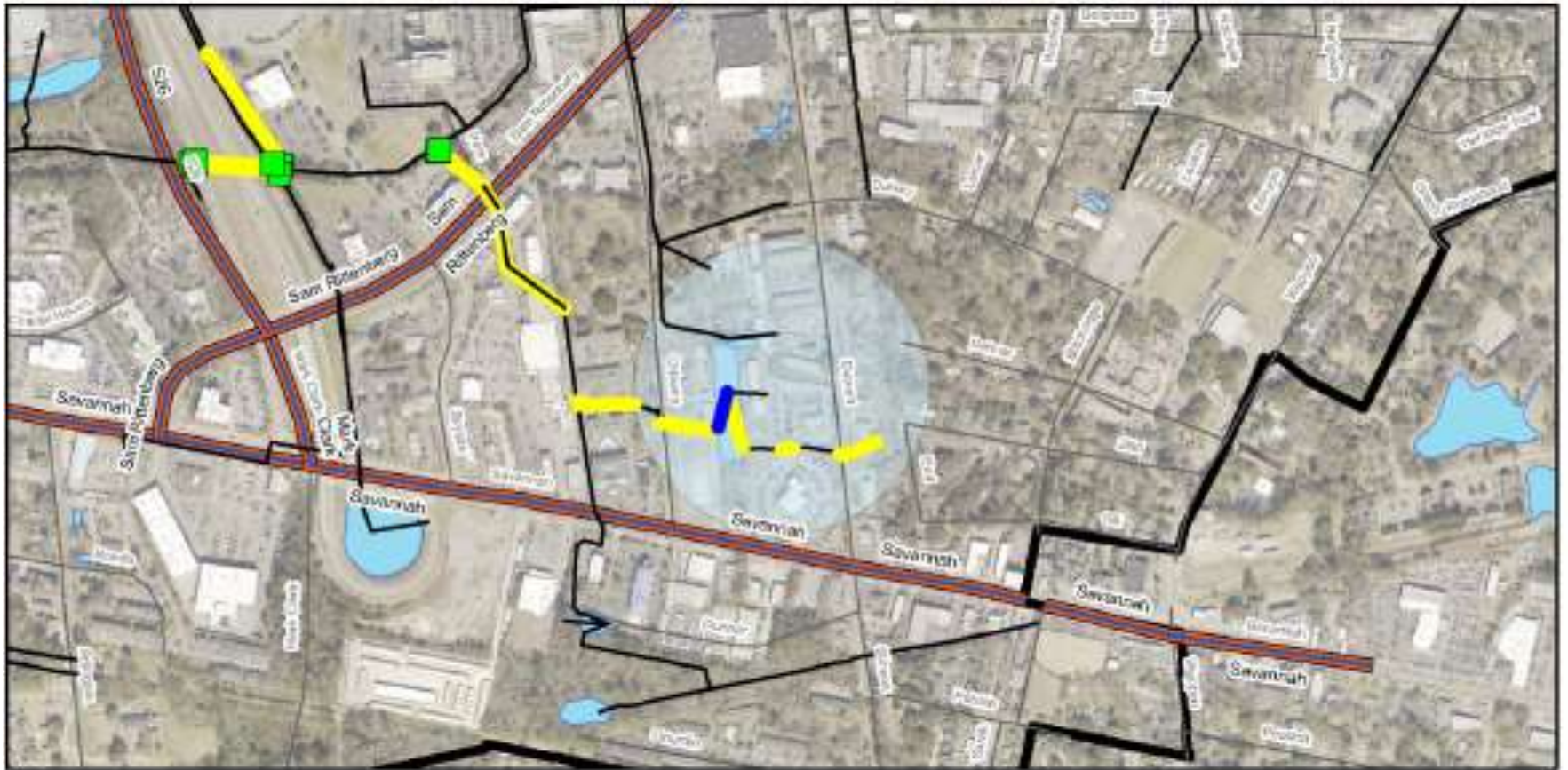
Dupont Wappoo Drainage



Area 1

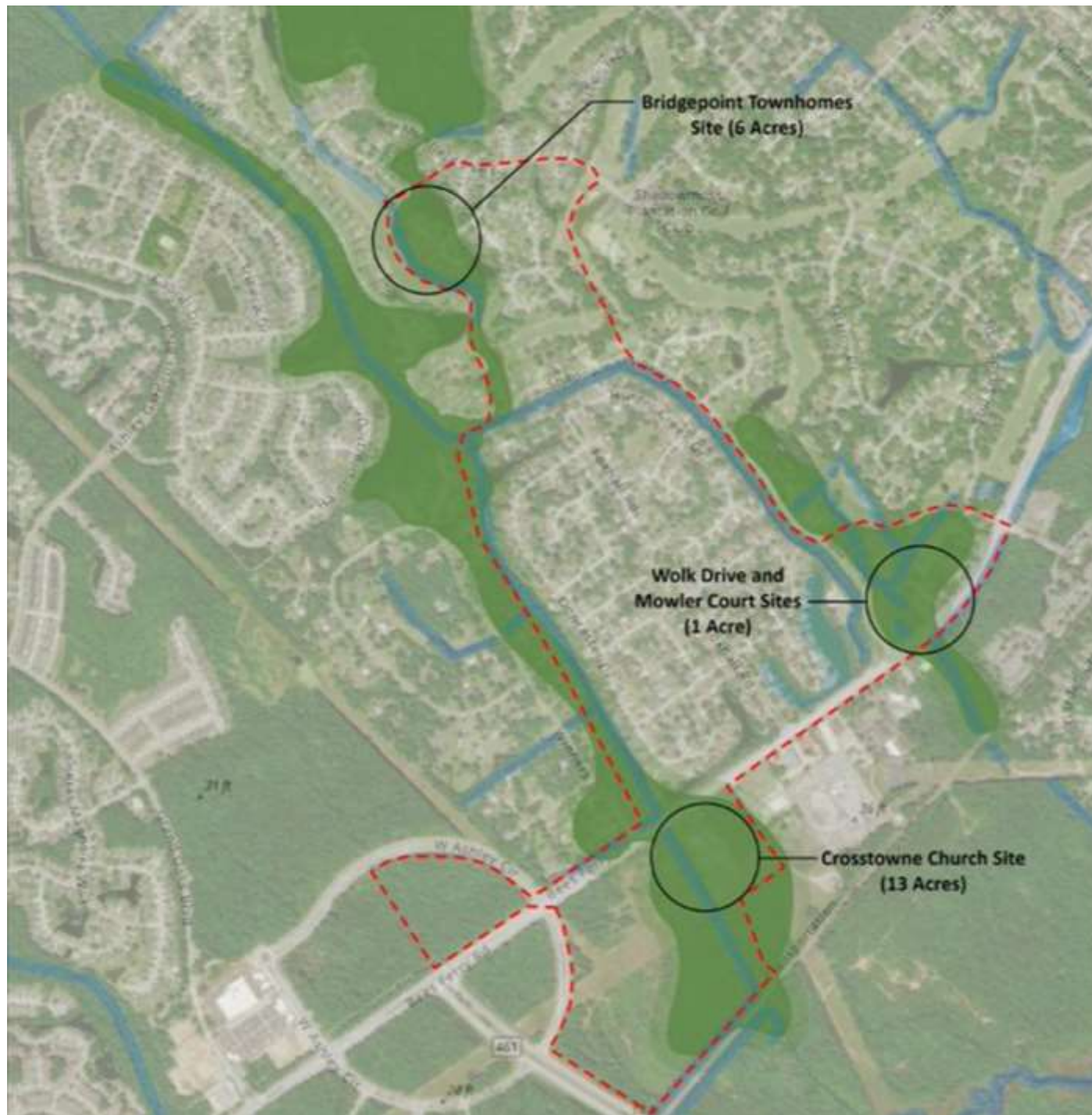


Area 2



[illegible]

Church Creek Flood Storage



Church Creek – Bridge Pointe



Church Creek – Mowler Ct / Wolk Dr



SW Development Regulations

ASSESS IMPACTS OF PROJECT ON THE WATERSHED

REQUIRE UNDEVELOPED PROPERTIES IN BASINS WITH FLOODING TO DEMONSTRATE NO NEGATIVE IMPACTS FROM DEVELOPMENT

REQUIRE DEVELOPED PROPERTIES IN BASINS WITH FLOODING TO COME AT LEAST PARTIALLY INTO COMPLIANCE WITH CURRENT STANDARDS

ALSO VALUATION BASED REDEVELOPMENT ACTIVITY THAT INCLUDES WORK INDEPENDENT OF TRADITIONAL LAND DISTURBANCE REQUIREMENTS