



GO WEST.



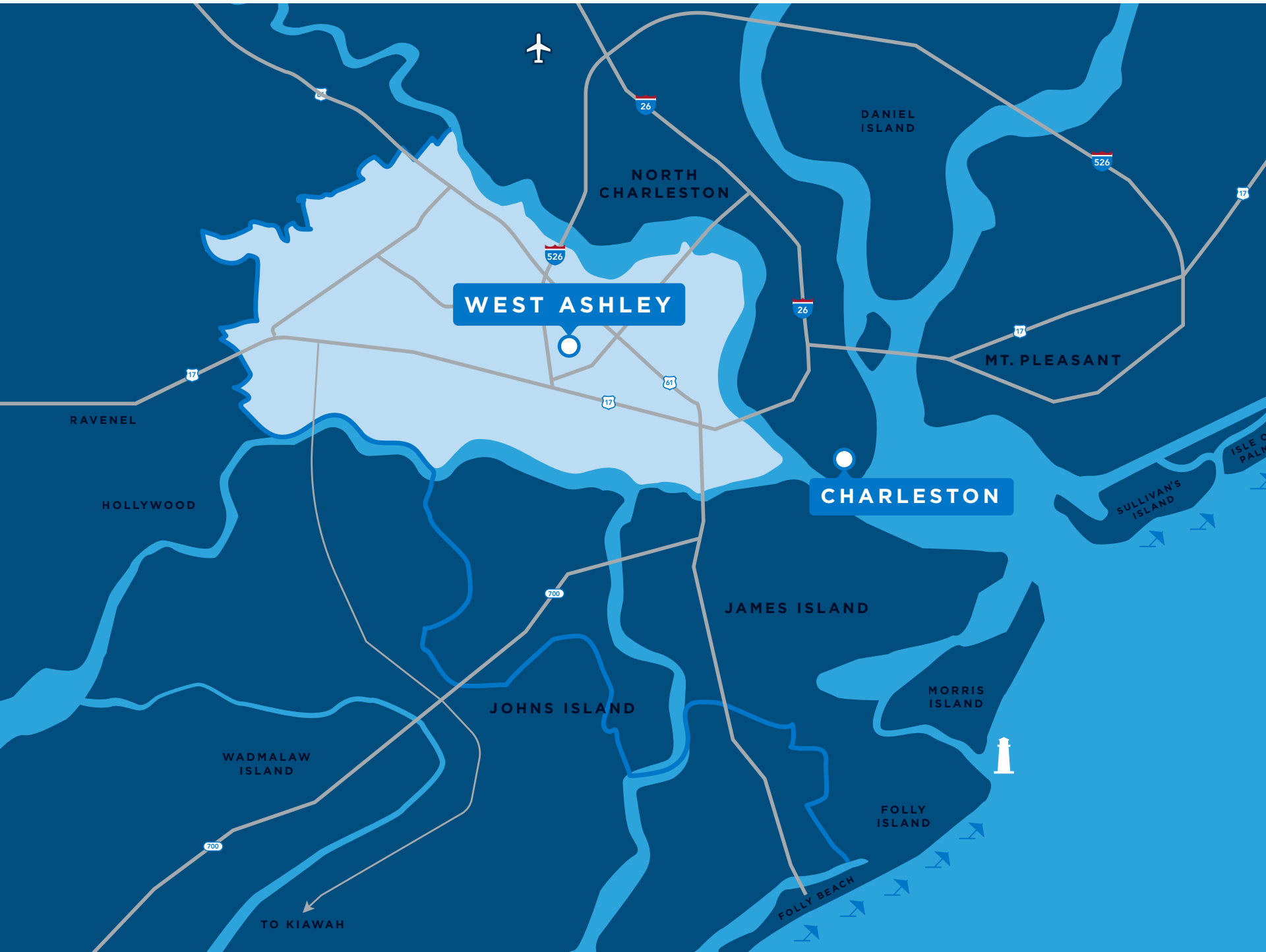
My heart. My home. **WEST ASHLEY**

Just over the river from the peninsula of downtown Charleston, West Ashley is a vibrant part of the City of Charleston. Stretching from the barrier islands and intracoastal waterway inland along the Ashley River, West Ashley is a welcoming community with historic roots that is transitioning into a modern marketplace with boutique shops, craft breweries, trendy restaurants and new employment opportunities. With Lowcountry charm and a vibrant attitude, it's time to go...GO WEST that is!



LIVING “WEST OF THE ASHLEY”

West Ashley (or, as it is historically known, West of the Ashley) is a vibrant district of Charleston located on “the other side” of the Ashley River. In fact, its residents account for almost half of the city’s 120,000+ residents.

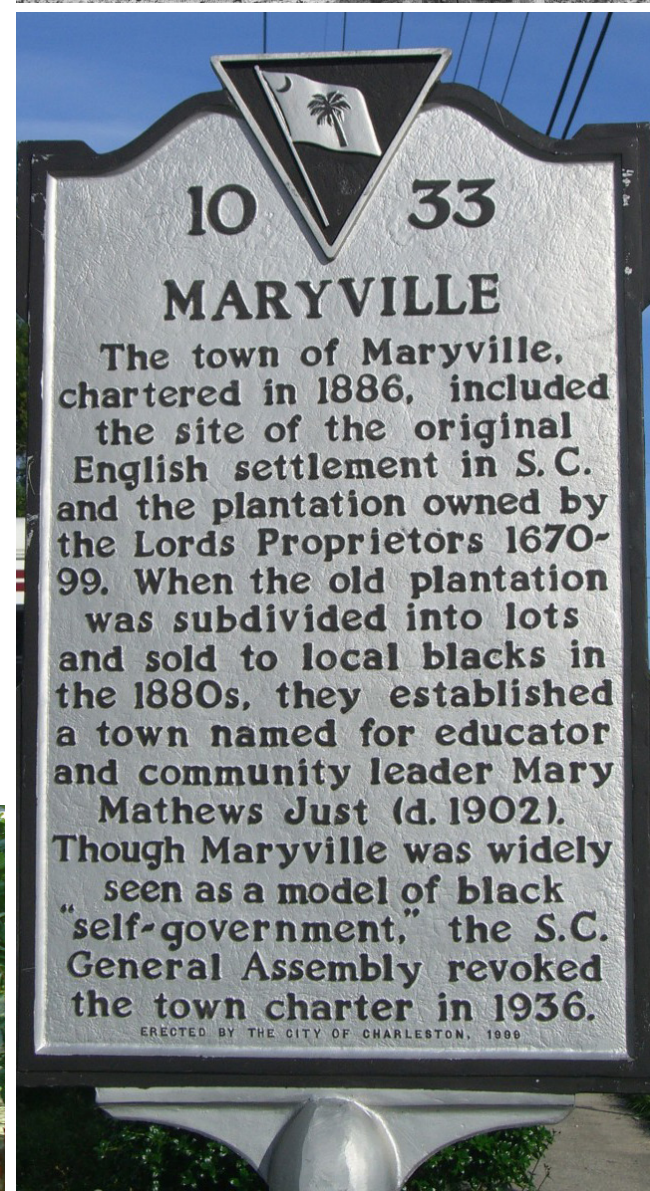
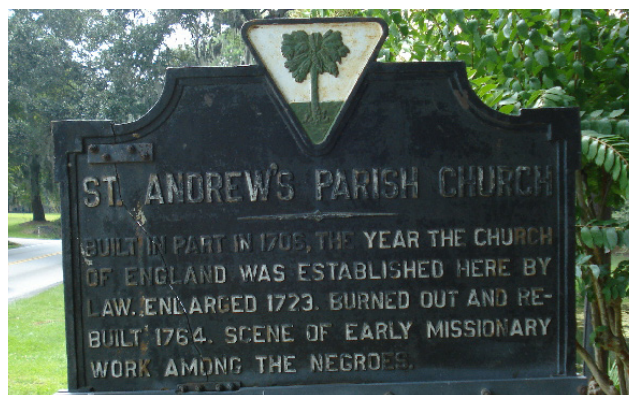
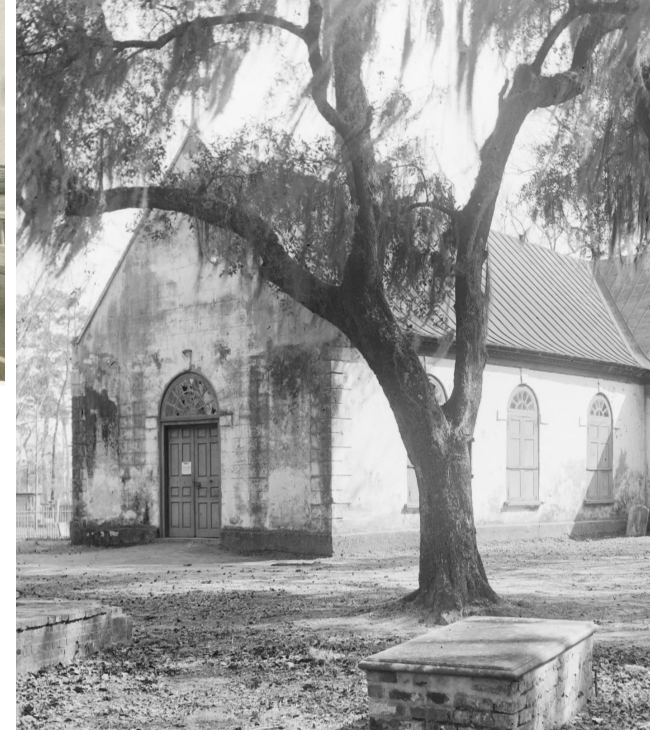




The History of **WEST ASHLEY**

The Birthplace of South Carolina
Charles Towne Landing!

Along the fertile marshes of the west bank of the Ashley River, the first British adventurers landed to explore the Low-country. This shore and the lands of St. Andrew's Parish saw the establishment of plantation economy which was fueled by enslaved west Africans. The St. Andrews Parish also saw the Revolutionary War, the Civil War, phosphate mining, truck farming, and now the suburban community you see today. At every step, entrepreneurs of diverse backgrounds have shepherded progress through both local businesses and international trade to transform this once agricultural area into Charleston's oldest and most populous suburb. We hope you will join us for the next chapter of our story!



LIVING YOUR BEST *to the West*



GROWING CULINARY SCENE

OVER 180 RESTAURANTS

- Avondale Business District featuring multiple unique local favorites
- Variety of dining options
 - Indian, Korean, Japanese, Chinese, Caribbean, Italian, French, Irish
- Two restaurants featured on *Guy Fieri's Diners, Drive-Ins and Dives*

BARLEY TOUCHING THE SURFACE

- 3 // West Ashley Breweries (*Frothy Beard, Edisto River, Charlestowne Fermentory*)

RELIGIOUS INSTITUTIONS

OVER 50 CHURCHES

- West Ashley grew from the original St. Andrew's Parish
- Two Synagogues
- Hindu Temple and Cultural Center
- Shown: Historic Emanuel AME Church located in "Maryville" >



SCHOOLS

PUBLIC SCHOOLS

- 2 High Schools, 1 Middle School, 7 Elementary Schools, 2 Charter Schools

PRIVATE SCHOOLS

- Porter-Gaud (1-12)
- Cooper School (1-8)
- Blessed Sacrament (1-8)
- Multiple Montessori Schools
- Addleston Hebrew Academy (1-8)
- Charleston Christian School (1-8)
- Adventist Christian Academy of Charleston

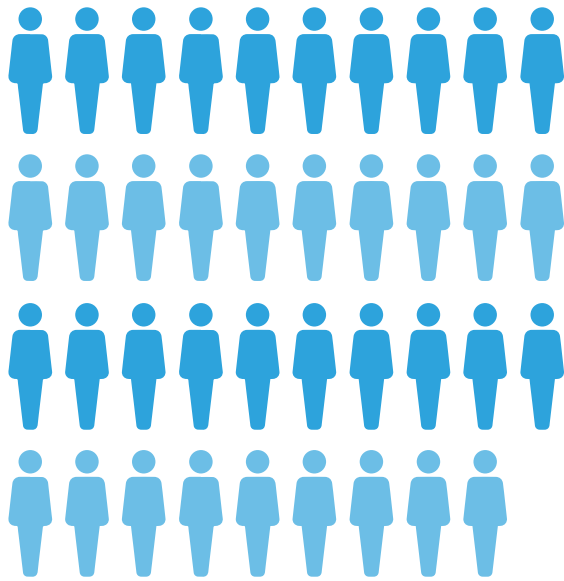
NEIGHBORHOODS

LIVING YOUR BEST TO THE WEST

- Established historic neighborhoods
- New construction and renovated homes abound
- Apartments
- Waterfront luxury lots
- Starter Homes
- Condominiums & Townhouses
- 55+ communities
- Workforce Housing



KEY FACTS



77,440
POPULATION



MEDIAN
Age

**MEDIAN
HOUSEHOLD
INCOME**



\$82,054

BUSINESS



3,331
BUSINESSES
2022 TOTAL
(SIC01-99)

36,016
Daytime
WORKERS



EMPLOYMENT



72% **WHITE
COLLAR**



14% **BLUE
COLLAR**



14% **SERVICES**

Source: US Census 2020

LIVING YOUR BEST *to the West*

“Go West friends!” There’s so much more to Charleston once you hop over the Ashley River. West Ashley is a fun & funky community with so much to see and do. With Lowcountry charm and a vibrant attitude, you’ll enjoy historic attractions, great local dining and shopping, and the Greenway for exploring and biking. If you like your home to have a personality, you’ll love what life West of the Ashley is all about.



YEAR ROUND OUTDOOR LIFESTYLE

AVERAGE HIGH TEMPS

- Winter // 45-65+
- Spring // 58-72+
- Summer // 78-95+
- Autumn // 60-80+

LET THERE BE LIGHT

- 230 // Days of Sun (Charleston CVB)
- 294 // Growing Season Days (Charleston CVB)



BIKE TRAILS - A CONNECTED COMMUNITY

GREENWAY // 10.5 MILES

- stretching from South Windemere to Johns Island

BIKEWAY // 2.5 MILES

- stretching from Savannah Highway to the Ashley River

BEE'S FERRY ROAD, CAROLINA BAY AND ASHLEY RIVER ROAD // 10 MILES

- separated trails
- additional 2 miles planned along Glenn McConnell

NEW PEDESTRIAN BRIDGE TO DOWNTOWN

- planned to connect Greenway and Medical District



EXPLORE OUR WATERWAYS

ACCESS TO INTRACOASTAL & ASHLEY RIVERS

KAYAKING // 10+ MILES

- 10+ miles of tidal creeks
- 20+ miles of river kayaking

BOAT LANDINGS // 4

- Pierpont Landing (*Cedar Lane*)
- Ashland Plantation Landing (*private*)
- Ripley Light Marina (*Ashley Point Drive*)
- Wappoo Cut Boat Landing (*Folly Road Boulevard*)

MILES OF WATER // 20+

- 7 miles of Stono River
- 3 miles of Wappoo Cut (*connects Stono to Harbor*)
- Over 10 miles on the Ashley River

PROXIMITY TO BEACHES

- 10 miles to Folly Beach
- 15 miles to Sullivan's Island
- 18 miles to the Isle of Palms
- + Edisto Island a short drive South



GONE FISHING

FRESHWATER FISHING IN WEST ASHLEY PARK

- Largemouth Bass • Blue Gill • Black Carpie

BRACKISH MARSH FISHING:

STONO & ASHLEY RIVERS, WAPPOO CUT, AND ALONG THE GREENWAY/BIKEWAY

- Red Drum • Largemouth Bass • Catfish
- Spotted Sea Trout • Summer Flounder

CRABBING

- Blue crab and stone crab year round
- Greenway at Long Branch Creek

OYSTER SEASON

- October to May
- Oyster roasts a staple of the Lowcountry

SHRIMPING

- Off docks and boats May to December





As a West Ashley resident, I know why we're so proud of this community – the lively neighborhoods, variety of small businesses, diverse dining, recreational spaces and more. There's something for everyone to celebrate.

JOHN TECKLENBURG
MAYOR - CITY OF CHARLESTON

.....



The personality of West Ashley comes through everything. From the people, to business owners to our area events, there's just something unique happening here and I love it!

ERIC POHLMAN
WEST ASHLEY PROJECT COORDINATOR



1670

WEST ASHLEY

Open for Business





Where local small businesses thrive. **WEST ASHLEY**

Balancing the right location for your business with costs, livability, infrastructure and accessibility for vendors and/or customers is often one of the more difficult decisions a small business owner will make. We hear time and time again from local business owners that their decision to move or open their business in West Ashley checks all of those boxes and more. From affordability to ease of commute, West Ashley hits the sweet spot for many entrepreneurs. “Our new West Ashley location provides a more relaxed atmosphere which is better for everyone and provides a peace of mind that other areas did not offer.” said Kelly Dyches of RKO-Total Graphics.



And larger employers build culture. **WEST ASHLEY**

The Medical University of South Carolina chose the Epic Center to expand for its innovative setting, potential for growth, and prime location. The facility offers plentiful parking, and MUSC was able to build a world-class specialty care clinic, West Ashley Medical Pavilion, closer to many Charlestonians. Over 22 specialties, including Orthopedics, Neurosciences, Ophthalmology, and Cardiology, are housed in this location. There is also an ambulatory surgery center with two operating rooms, two procedure rooms, and a complete diagnostic imaging center, including radiology, CT scanning, MRI, and more.



MEET ERIC

WEST ASHLEY PROJECT COORDINATOR

Eric Pohlman is the West Ashley Project Coordinator for the City of Charleston. His core mission is to achieve the goals of Plan West Ashley and its implementation matrix. He partners with multiple agencies, both internal to the city and external with county and state. He also serves as a point of contact for commercial projects within City limits and speaks with neighborhood leaders, community activists, and residents about how to participate in Plan West Ashley.

He is the staff person for West Ashley Revitalization Commission, an advisory body which meets bi-monthly to hear presentations on investments in West Ashley and provide input when appropriate on large scale projects. He is currently working on implementing Plan West Ashley through retail recruitment, commercial permit guidance, and coordination of large investment projects in the West Ashley area.

Eric's background is in the built environment with master's degrees from Savannah College of Art and Design in architecture and from the University of South Florida in urban and community design. He has worked for Berkeley County and the Town of Mount Pleasant in the planning departments.

e: pohlmane@charleston-sc.gov

o: 843.724.3776 // **c:** 843.509.8252 // **f:** 843.724.3772





CITY LINKS AND PHONE NUMBERS

INTERACTIVE CITY MAP

Find property-based information including the County's Property Record Card, Council District, services, FEMA flood zones and more.

gis.charleston-sc.gov/interactive/mapnet

NEIGHBORHOOD SERVICES

Find out about Neighborhood Council info & services. / [843.720.3886](tel:843.720.3886)

charleston-sc.gov/neighborhoods

CITY COUNCIL

Find your City Council member. / charleston-sc.gov/citycouncil

BOARDS & COMMISSIONS

Learn about the various boards and keep up-to-date with meeting schedules and agendas.

charleston-sc.gov/boards

FARMERS MARKETS

Search for a farmers market near you. / lowcountrylocalfirst.org/lowcountry-farmers-markets

ECONOMIC DEVELOPMENT LINKS

CHARLESTON COUNTY DEVELOPMENT / <https://www.charlestoncountydevelopment.org>

CHARLESTON REGIONAL DEVELOPMENT ALLIANCE / <https://www.crda.org>

CHARLESTON VISITORS & CONVENTION BUREAU (CVB) / <https://www.charlestoncvb.com>

BUSINESS SERVICES

PERMIT CENTER

Apply for building permits, street blocking permits & check the status of your project. / [843.724.7450](tel:843.724.7450)

<https://www.charleston-sc.gov/856/Permit-Center>

BUSINESS & NEIGHBORHOOD SERVICES

Find out about Neighborhood Council info & services. / [843.720.3886](tel:843.720.3886)

CITY OF CHARLESTON PERMIT CENTER

<https://www.charleston-sc.gov/856/Permit-Center>

CITY OF CHARLESTON BUSINESS LICENSE

Apply for or update your business license. / [843.724.3711](tel:843.724.3711)

<https://www.charleston-sc.gov/134/Business-License-Information>

MINORITY & WOMEN-OWNED BUSINESS ENTERPRISE

Strives to increase participation of minority and women-owned business. / [843.724.7434](tel:843.724.7434)

<https://www.charleston-sc.gov/127/Minority-Women-Owned-Business-Enterprise>



COUNTY LINKS AND PHONE NUMBERS

WEBSITE

<https://charlestoncounty.org>

FACEBOOK

<https://www.facebook.com/ChasCountyGov>

ELECTED OFFICIALS

<https://www.charlestoncounty.org/elected>

CITIZENS ACCESS PORTAL

<https://egovweb.charlestoncounty.org/CitizenAccess>

BUSINESS LICENSE

<https://www.charlestoncounty.org/departments/revenue-collections/business-license>
[843.202.6080](tel:843.202.6080)

CHARLESTON COUNTY ZONING AND PLANNING

<https://www.charlestoncounty.org/departments/zoning-planning/>
[843.202.7200](tel:843.202.7200)

- Board of Zoning Appeals: bza@charlestoncounty.org
- Historic Preservation Commission: cchpc@charlestoncounty.org
- Permitting: zoningpermits@charlestoncounty.org
- Planning Commission: ccpc@charlestoncounty.org
- Short-Term Rental, Solid Waste, Environmental Complaints: codeenforcement@charlestoncounty.org
- Site Plan Review: siteplanreview@charlestoncounty.org
- Subdivision: subdivision@charlestoncounty.org
- General Questions or Concerns: planning@charlestoncounty.org

TRANSPORTATION DEVELOPMENT

<https://roads.charlestoncounty.org>
[843.202.6137](tel:843.202.6137)

CHARLESTON COUNTY PARKS AND RECREATION

<https://ccprc.com/>
[843.795.4386](tel:843.795.4386)

COMMUNITY EMERGENCY RESPONSE TEAM

<https://www.charlestoncounty.org/departments/emergency-management>

CHARLESTON COUNTY GREENBELT PROGRAM

<https://greenbelt.charlestoncounty.org/>
[843.202.7204](tel:843.202.7204)



GO WEST.

HISTORIC. WELCOMING. VIBRANT.